



October 2015 News Update

Upcoming Events

The German Immigration Tour

“They Came to America”

Thursday, October 15, 2015 (5-6pm)

Antje Petty of the Max Kade Institute will lead The German Immigration Tour at Pope Farm Conservancy on Thursday, October 15th from 5-6 pm. Hear about the story of German Immigration to the area in the 1850-1870's. Learn about why they came here, the “Push-Pull” dynamics that related to all immigrants, and the “Chain Migration.” Learn how they got here—by sea and by land, how they lived here and developed a new community in America. Find out who



lived at the German cabin site at Pope Farm Conservancy, and how the First Lutheran Church (built in June 1866 and located at the corner of Old Sauk Road and Pleasant View Road) was part of this German Heritage. And come to know just how many of these German descendants still live in this area. We hope you can join us for this educational adventure at Pope Farm Conservancy.

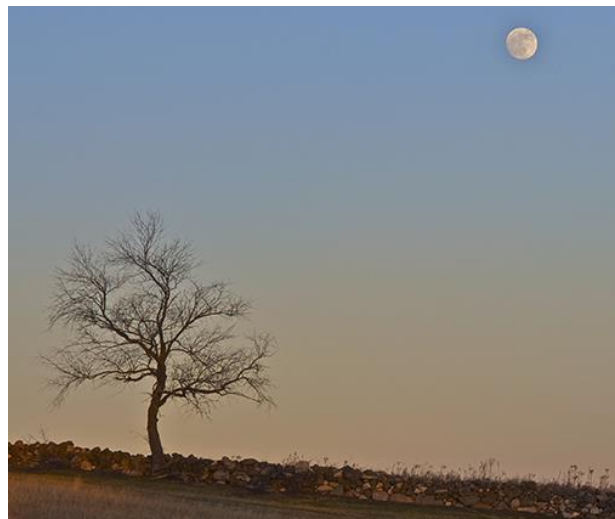
This tour is free and open to the public. No registration is required.

Volunteer Full Moon Social

Tuesday, October 27, 2015 (6:00 - 7:30 pm)

For all the volunteers that have helped the FOPFC in the past, we will be hosting a full moon social at the top of the hill on Tuesday, October 27th from 6:00 - 7:30 pm. The Friends will be providing treats and beverages. It has been a very successful year for the FOPFC thanks to you! Please come celebrate with us!

Photo by Jack Sherman



It's not too late to help with Seed Collection

More seed collection sessions to come...Sign up today!

On October 10th, we had 15 volunteers help us with seed collection and weeding in the prairies at PFC. Thank you to all the volunteers who came out - we accomplished so much in a few short hours. The harvested seeds will be used to improve the quality and diversity in these prairies.

There are still more seed collection sessions now through November, and we need your help to collect seeds when they are ripe. No experience is necessary, but we do ask that you sign up on our website:

<https://www.popefarmconservancy.org/events/2015-events/2015-prairie-seed-collection/>

We will have team leaders on hand to help you on each of those dates. Please join us – it's fun and it's an investment in the future. Hope to see you in the prairies soon!

Photo by Dennis Schenborn



Past Events

Heritage Day

420 people enjoyed a day of learning

Over 400 people visited Pope Farm Conservancy for our 2nd annual Heritage Day. It was a beautiful fall day in September. Visitors enjoyed horse-drawn wagon rides, while learning about the history of the land.

We also had six stations set up with six local experts presenting on different topics about the Conservancy.

Article continued on next page...





The six stations and their respective presenters were: "Geology" with Eric Carson, "Native Prairies" with Curt Caslavka, "Native Americans" with Amy Rosebourgh, "Western European Settlers" with Antje Petty, "The Soil Soldiers and the CCC" with Bob Moore and his wife Lois, and "Soil Foundations in an Ever-changing Landscape" with Ed Bosewell and Emily Fuger.



Heritage Day photos by Janie Starzewski

Many thanks to our speakers for sharing their knowledge and expertise with everyone who attended this wonderful event. Visitors and speakers alike were very pleased with this learning experience.

Members Picnic

On a blustery October day, members gathered on the top of the hill and braved the weather to enjoy a picnic among friends. The food was great, and the conversations about the Conservancy were enjoyable.

Article continued on next page...

Photo by Dave Peterson



The highlight of the picnic was a presentation given by Bob Moore, a historian and author (pictured below with his wife, Lois). Bob has written several books about the Civilian Conservation Corps (CCC) and is currently researching the CCC camp in Mt. Horeb, WI. This camp provided the labor for the CCC spillway at what is now Pope Farm Conservancy. During his research, Bob located several photos taken in 1938 of the CCC spillway being built in what we know today as Pope Farm Conservancy. It was remarkable to look at the CCC boys posing in front of the spillway in front of the CCC and SCS sign that remains to this day.



Photo by Dave Peterson

“On the Move” - The Migratory Birding Tour

39 species were seen or heard

Roughly 40 people enjoyed the popular Migratory Birding Tour on September 27th at the Conservancy. “On the Move” featured migratory birds, and Mike McDowell was remarkable in making us aware of birds that visit or make their home at Pope Farm Conservancy.

Photo by Barbara Esser



FOPFC to Manage Three Additional Prairies at PFC

Beginning in 2016, the Friends have agreed to manage the Blackhawk, Hillside, and Wheatfield prairies (in addition to the Oak Savanna, currently managed by the FOPFC) for the Town of Middleton.

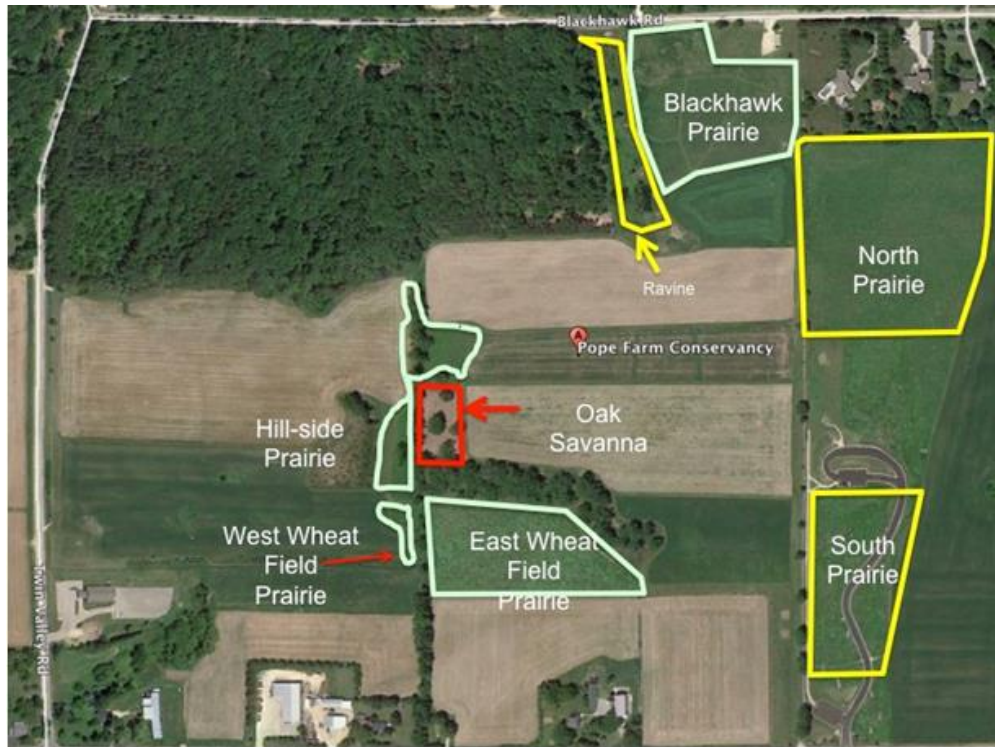


Figure 1. Map of Pope Farm Conservancy

The Town manages prairies in yellow; Prairies in red or green are managed by the FOPFC

The reason the FOPFC has agreed to do this is to help the town increase the diversity, and maintain a higher level of quality in these prairies. The Town will save approximately \$9,000 annually, because the FOPFC will manage these prairies for them at no cost. This is an important commitment to the Town on the part of the FOPFC. One of the many reasons the FOPFC has offered to manage these prairies for the town is because of the prevalence of white sage that has impacted the diversity in some of the prairies. As part of our management responsibilities, the prairie team will be conducting research in an attempt to determine the best way forward to correct the lack of diversity caused by the prevalence of white sage. Once this is determined, the FOPFC will go to the Town of Middleton to ask for their approval in order for the FOPFC to institute those recommendations. The FOPFC plans to utilize our volunteers to help with this effort.

FOPFC has also become part of the Prairie Partner Program. Our Prairie Partners are: the Natural Heritage Land Trust, Friends of Pheasant Branch, Madison Audubon (Goose Pond), and U.W. Madison Lakeshore Preserve (picnic point). The Madison Audubon Society receives approximately 75-100 applications for work in these prairies from UW students that are majoring in an ecology related field. From these applicants, 5 are chosen to form a prairie team during the summer. This team is employed by the Madison Audubon Society, and they rotate as a team from partner site to

partner site. The FOPFC will have the team at PFC 6 days during the summer of 2016, and will reimburse the Madison Audubon Society for hours worked at PFC. We believe the combination of our volunteer efforts and our participation in the Prairie Partner Program will lead to an even greater opportunity in the future, but this is a great first step.

Join us next summer, and help us manage these prairies. Many thanks go to Curt Caslavka, and Dennis Schenborn for putting together this proposal, and for the Town of Middleton for their cooperation and approval.

Question of the Month

What do you need to do to prepare the Conservancy for winter?

It is important to understand that the Conservancy is OPEN during the winter for winter activities such as cross country skiing (trails are groomed), snowshoeing, and sledding. To use the Conservancy during the winter months, the Old Sauk Rd. parking lot will be plowed. On October 18th, the gate to the upper parking lot will be closed, and it will only be opened by volunteers if the weather permits or if there are volunteers available to open it. We will try to keep it open on the weekends during the remainder of October. In November, the gate to the upper parking lot will be closed permanently for the winter. The water will be shut off by the first frost, and the interpretive signage will be taken down between October 18th and November 1st. The signs are sensitive to ultra violet rays, and are taken inside for the winter to prolong their use.

If you have a question for us, please send it to info@popfarmconservancy.org and we will try to answer it.

Renew Your Membership Online

Just a reminder...you can now renew your membership securely online using your PayPal account or a debit or credit card. If you have already renewed your membership, THANK YOU! As a member of FOPFC, you will continue to receive monthly updates on the Conservancy, bi-annual newsletters, notification of education tours and special events, and invitations to help us in our volunteer efforts. Memberships are good for one (1) calendar year from the date you join or from the last date of your previous membership. We hope you enjoy being a part of our community. Go to <https://www.popfarmconservancy.org/membership/> to renew your membership today!



Friend of the Month

Jane Ilgen

Jane Ilgen has helped the Friends of Pope Farm Conservancy in so many ways. She is on the Events Committee and helps to plan upcoming events throughout the year. She has hosted some of those events, such as the Fall Membership Picnic. Jane has an accounting background and has taken over the tracking and possession of the retail inventory that we use to sell to the public. At the events, and during the nine days of Sunflower Days, Jane was there every time to bring over the inventory and help set up the retail display. She makes the deposits, makes sure there is cash available, and works closely with the treasurer of FOPFC. Jane loves Pope Farm Conservancy, and has volunteered for many prairie work sessions, including seed collection and invasive weed control. Jane Ilgen has truly made a difference at FOPFC, and for that we are all so very appreciative of her efforts.

Photos of the Month

Jim Stewart and Jack Sherman are our photographers of the month. Thanks for sharing your beautiful photos on our [Facebook page](#)! Here are just a few of the awesome shots they submitted this past month.



Butterfly, Bees, Beetles - Photo by Jim Stewart



Indigo Bunting, Bumble Bees and Sunflower - Photo by Jim Stewart



Prairie Fireworks - Photo by Jack Sherman

We welcome you to share your photos of Pope Farm Conservancy for our next "Photo of the Month." You can upload your photo(s) to our Flickr page at <https://www.flickr.com/groups/fopfc-photos/> or send them to photos@popefarmconservancy.org.

Connect with Friends of Pope Farm Conservancy on Facebook

Are you on Facebook? It's a great way to share your pictures and stories with others who "like" Pope Farm Conservancy.

<https://www.facebook.com/FriendsOfPopeFarmConservancy>



**Thank you for joining the
Friends of Pope Farm Conservancy!
Our Journey Begins and You are part of it!**

